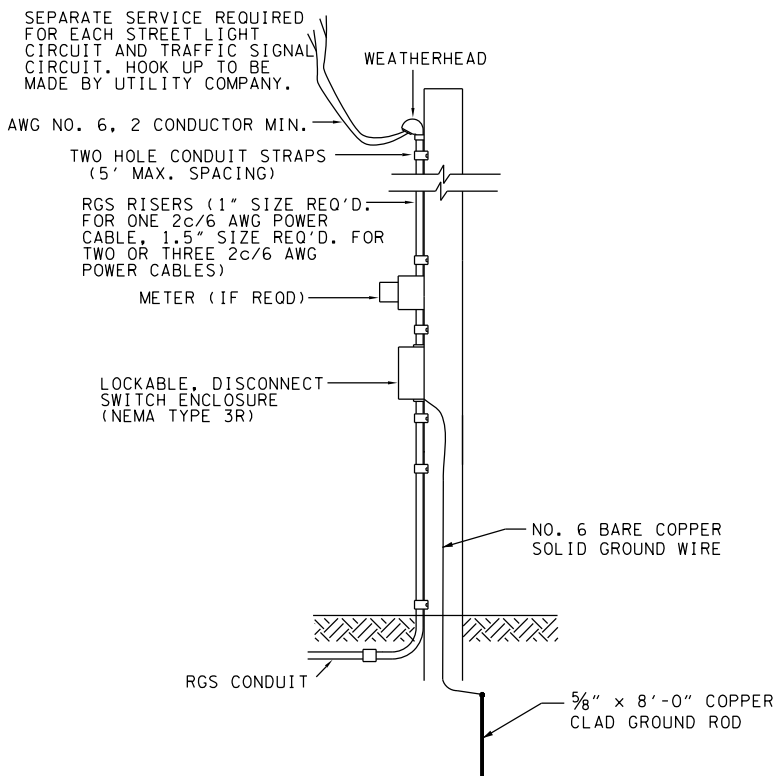
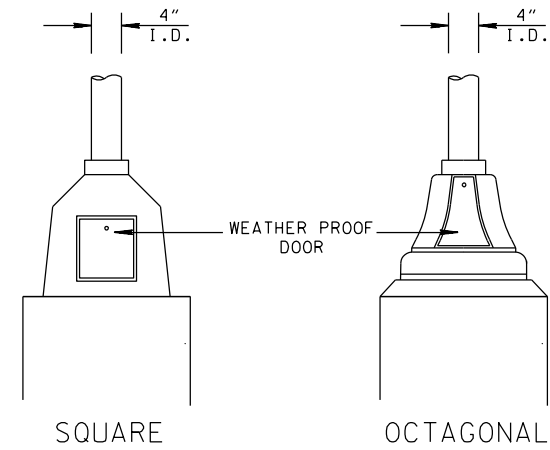


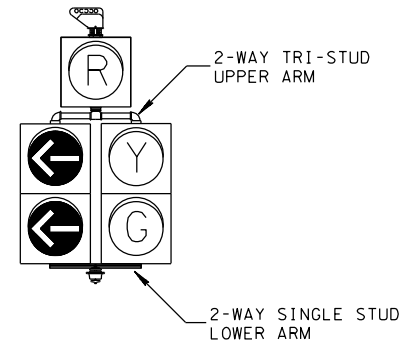
REV. 12-4-13: CHANGED ANCHOR BOLTS TO THREADED.
REV. 5-1-14: MODIFIED PEDESTAL POLE HEIGHT.



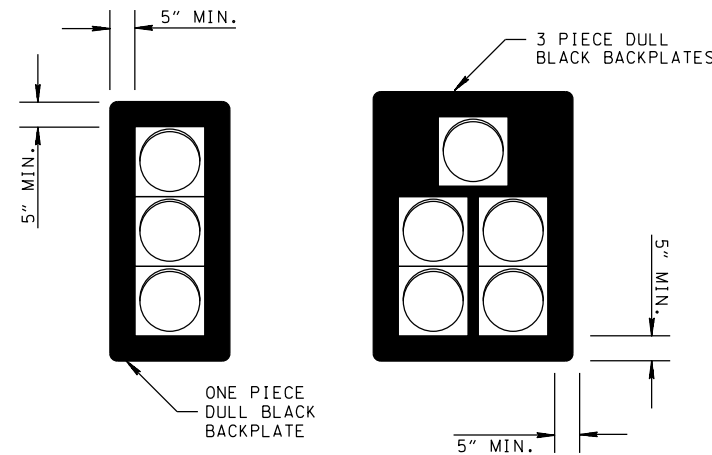
POWER SERVICE DETAIL



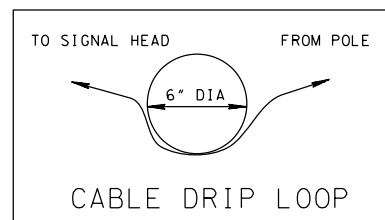
CAST PEDESTAL BASE ALTERNATES



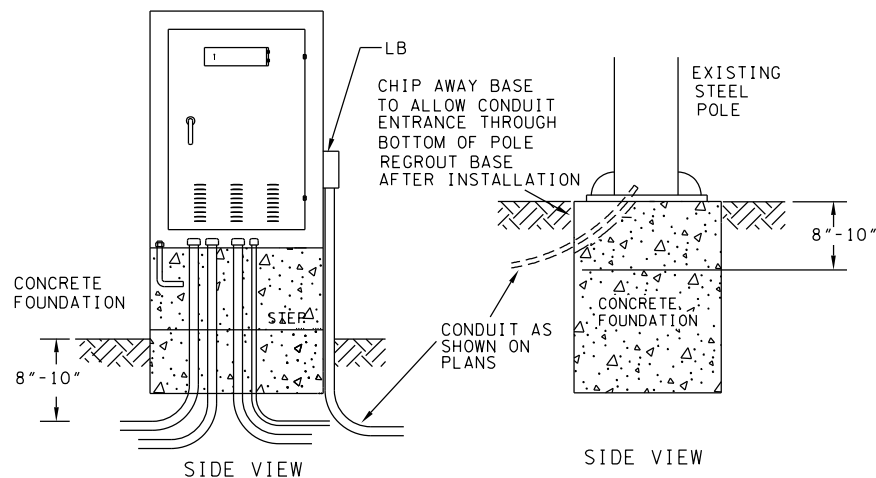
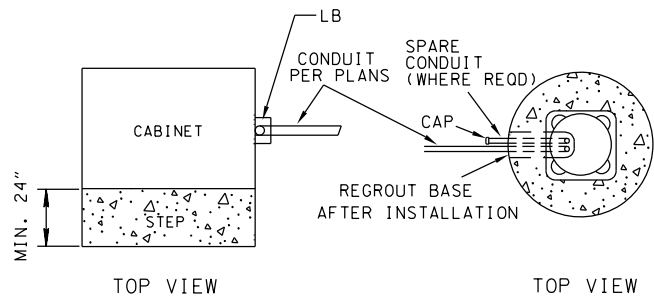
5-SECTION SIGNAL HEAD



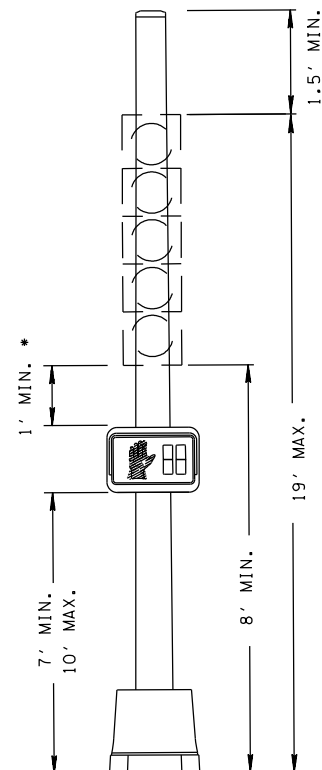
TRAFFIC SIGNAL BACKPLATE DETAIL



TO PREVENT WATER FROM ENTERING SIGNAL HEAD LOOP CABLE BETWEEN POLE AND SIGNAL HEAD

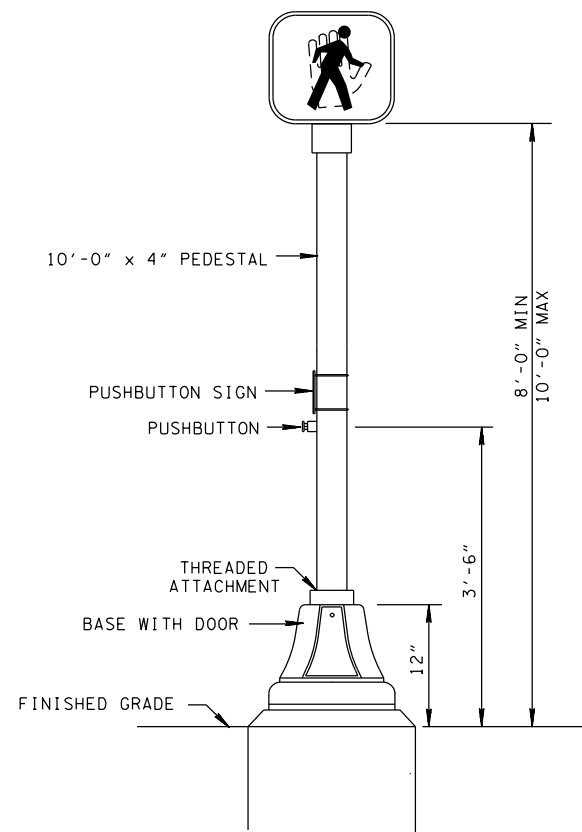


CONDUIT ENTRANCE DETAIL (EXISTING CABINET OR POLE)



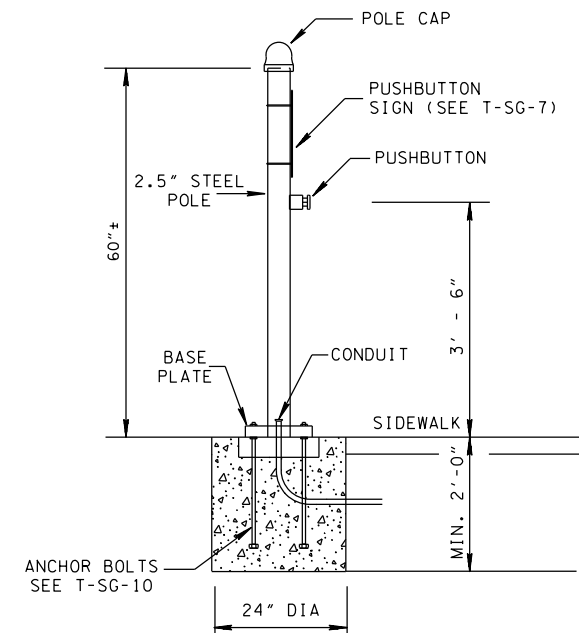
PEDESTAL POLE

* IF PEDESTRIAN DISPLAYS ARE PROVIDED ON SAME POLE, THE MINIMUM HEIGHT OF THE VEHICULAR DISPLAY SHALL BE AT LEAST ONE FOOT ABOVE THE TOP OF THE PEDESTRIAN DISPLAY, HOUSING AND BRACKETS.

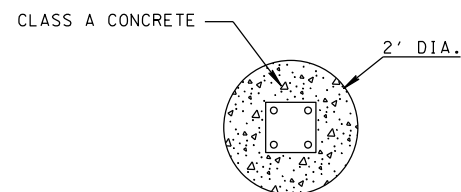


PEDESTAL MOUNTING

FOR PEDESTAL POLE FOOTING
SEE 2' DIAMETER FOOTING ON T-SG-10



PEDESTRIAN PUSHBUTTON POST



FOUNDATION DETAIL
PEDESTRIAN PUSHBUTTON POST

MINOR REVISION -- FHWA
APPROVAL NOT REQUIRED.

STATE OF TENNESSEE
DEPARTMENT OF TRANSPORTATION

MISCELLANEOUS
SIGNAL
DETAILS

7-29-04 T-SG-9A